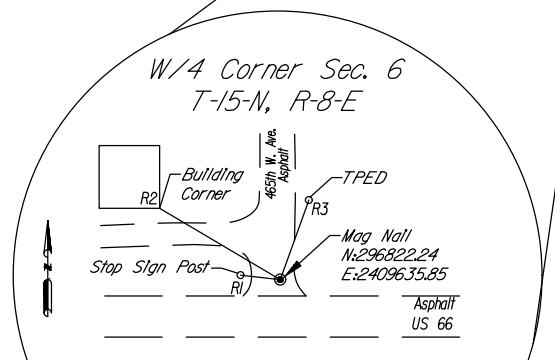
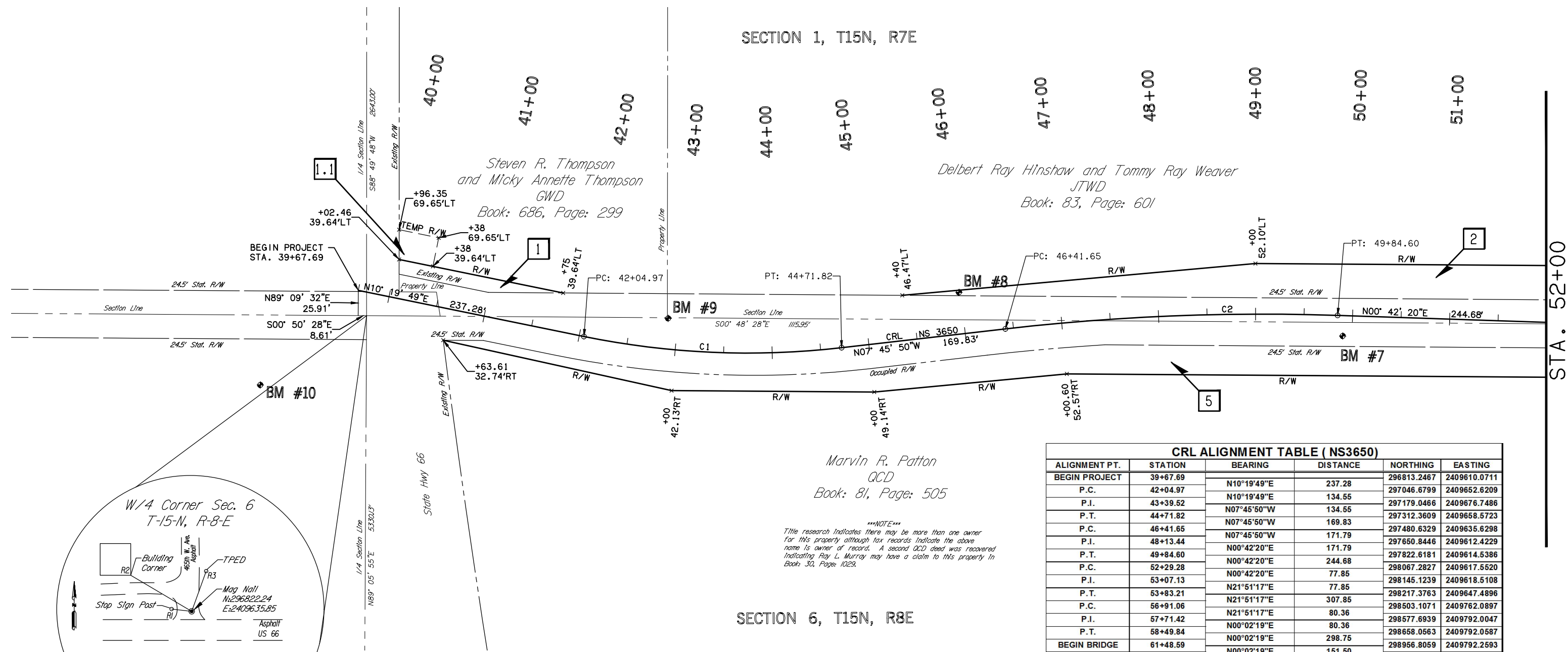


Benchmark - *7 Sta. 49+90.49, 21.07' R. 80d In 22" Pecan ELEV-814.38 N-297828 E-2409635	Benchmark - *8 Sta. 45+98.41, 42.80' L. 80d In 30" Walnut ELEV-818.18 N-297432 E-2409599	Benchmark - *9 Sta. 42+89.47, 31.59' L. 80d In 24" Elm ELEV-816.81 N-297132 E-2409632	Benchmark - *10 80d In PP ELEV-816.96 N-296714 E-2409709
--------------------------------------------------------------------------------------------------------	---------------------------------------------------------------------------------------------------------	------------------------------------------------------------------------------------------------------	----------------------------------------------------------------------

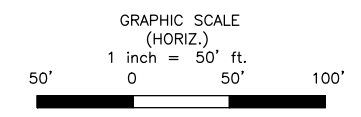
DESCRIPTION	REVISIONS	DATE
-------------	-----------	------



LINE	BEARING	DIST.
R1	N 83° W	416'
R2	N 59° W	146.0'
R3	N 19° E	88.0'

ALIGNMENT PT.	STATION	BEARING	DISTANCE	NORTHING	EASTING
BEGIN PROJECT	39+67.69	N10°19'49"E	237.28	296813.2467	2409610.0711
P.C.	42+04.97	N10°19'49"E	134.55	297046.6799	2409652.6209
P.I.	43+39.52	N07°45'50"W	134.55	297179.0466	2409676.7486
P.T.	44+71.82	N07°45'50"W	169.83	297312.3609	2409658.5723
P.C.	46+41.65	N07°45'50"W	171.79	297480.6329	2409635.6298
P.I.	48+13.44	N00°42'20"E	171.79	297650.8446	2409612.4229
P.T.	49+84.60	N00°42'20"E	244.68	297822.6181	2409614.5386
P.C.	52+29.28	N00°42'20"E	77.85	298067.2827	2409617.5520
P.I.	53+07.13	N21°51'17"E	77.85	298145.1239	2409618.5108
P.T.	53+83.21	N21°51'17"E	307.85	298217.3763	2409647.4896
P.C.	56+91.06	N21°51'17"E	80.36	298503.1071	2409762.0897
P.I.	57+71.42	N00°02'19"E	80.36	298577.6939	2409792.0047
P.T.	58+49.84	N00°02'19"E	298.75	298658.0563	2409792.0587
BEGIN BRIDGE	61+48.59	N00°02'19"E	151.50	298956.8059	2409792.2593
END BRIDGE	63+00.09	N00°02'19"E	146.79	299108.3059	2409792.3611
P.C.	64+46.88	N00°02'19"E	57.46	299255.0938	2409792.4597
P.I.	65+04.33	N21°05'42"W	57.46	299312.5497	2409792.4982
P.T.	65+60.48	N21°05'42"W	189.52	299366.1552	2409771.8188
END PROJECT	67+50.00	N21°05'42"W		299542.9699	2409703.6090

CURVE NO.	P.I. STATION	Δ	D	R	T	L	E	P.C.		P.I.		C.C.		P.T.		DESIGN V MPH	FULL SUPER
								NORTHING	EASTING	NORTHING	EASTING	NORTHING	EASTING	NORTHING	EASTING		
C1	43+39.52	18°05'39.46"	06°46'50.04"	845.00	134.55	266.86	10.65	297046.6799	2409652.621	297179.0466	2409676.749	297198.2085	2408821.318	297312.3609	2409658.5723	35	3.60%
C2	48+13.44	08°28'10.48"	02°28'10.72"	2,320.00	171.79	342.95	6.35	297480.6329	2409635.6298	297650.8446	2409612.4229	297794.0456	2411934.3626	297822.6181	2409614.5386	45	2.60%
C3	53+07.13	21°08'56.31"	13°44'23.90"	417.00	77.85	153.92	7.20	298067.2827	2409617.5520	298145.1239	2409618.5108	298062.1471	2410034.5204	298217.3763	2409647.4896	45	7.60%
C4	57+71.42	21°48'58.03"	13°44'23.90"	417.00	80.36	158.78	7.67	298503.1071	2409762.0897	298577.6939	2409792.0047	298658.3363	2409375.0588	298658.0563	2409792.0587	45	7.60%
C5	65+04.33	21°08'01.00"	18°36'09.00"	308.00	57.46	113.61	5.31	299255.0938	2409792.4597	299312.5497	2409792.4982	299255.3006	2409484.4597	299366.1552	2409771.8188	35	6.20%



DESIGN	BSF	07/17	OKLAHOMA DEPARTMENT OF TRANSPORTATION GUY ENGINEERING SERVICES, INC. ALIGNMENT DATA STATE JOB NO. 29407(04) SHEET NO. R003 CREEK COUNTY BR. 181A LITTLE DEEP FORK
DRAWN	BLP	07/17	
CHECKED	PAE	07/17	
APPROVED	JRW	07/17	
SQUAD			

F:\1day, July 28, 2017 10:16:07 AM
 V:\13-850 Br 181A Little Deep Fork Ck - Creek 3\CIV3D\PLANS\850-ALIGNMENT DATA SHEETS.dwg